

CleanZone Aura Max Digi

High-performance extraction, the quietest in class

The CleanZone Aura Max Digi offers greater coverage and flexibility for more demanding applications. Designed to support single or dual-user setups, it delivers reliable fume extraction while remaining easy to position and integrate into the working environment.

The unit is the quietest in class, creating a more comfortable working environment. Efficient filtration, automatic filter cleaning and performance alerts help to keep maintenance simple and productivity consistent, while the long-life brushless motor further reduces downtime.

The Aura Max Digi allows on torch display and control, allowing the operator to monitor and adjust settings in real time.

For maximum performance pair the Aura Max with the [Aeroarc Digital Fume torch](#) to capture fumes directly at the source, ensuring a safer, cleaner environment for every weld.



Full control, optimized performance, premium productivity

Filter	
Stages	2
Filtration Efficiency	99.9%
Cleaning	Auto Cleaning (compressed air)
Filter Area: Main HEPA	3.5m ² TBC
Filter Material: Main Spark Arrestor	Polyester and PTFE Galvanised Steel

Performance	
Extraction Capacity	141.5 m ³ /h @ 18KPa 223 m ³ /h @ 5KPa
Maximum Vacuum	22KPa
Max Airflow (fan on its own)	186 m ³ /h

Performance	
Power Supply	220V 1 Phase - 50Hz-60Hz 380V 3 Phase - 50Hz-60Hz
Motor Power	220V 1 Phase - 2200W 380V 3 Phase - 2200W
Noise Level	XXdB(A) @ 50% 70dB(A) @ 100%

KEY FEATURES

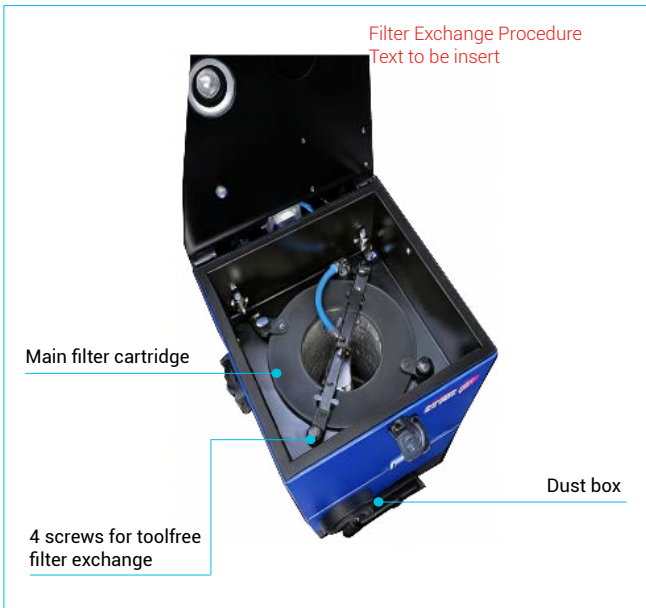
- **Users:** Up to 2
- **Brushless Motor:** Continuous operation; ≥5,000-hour service life
- **Operation:** Auto start/stop function
- **Dust Collection:** Automatic filter cleaning
Visual and audio alarms
6L integrated tray
- **Digital Display + On-Torch Controls:**
Parameters at a glance; adjust extraction and flow rates from torch

APPLICATIONS

- Single or dual torch welding stations
- Medium to heavy duty applications
- Moderate to high fume generating metals, e.g., mild steel, aluminium, alloy metals, Flux cored.
- Up to 25m hose interconnection (plus torch)
- Flexible layouts with on-torch digital adjustments

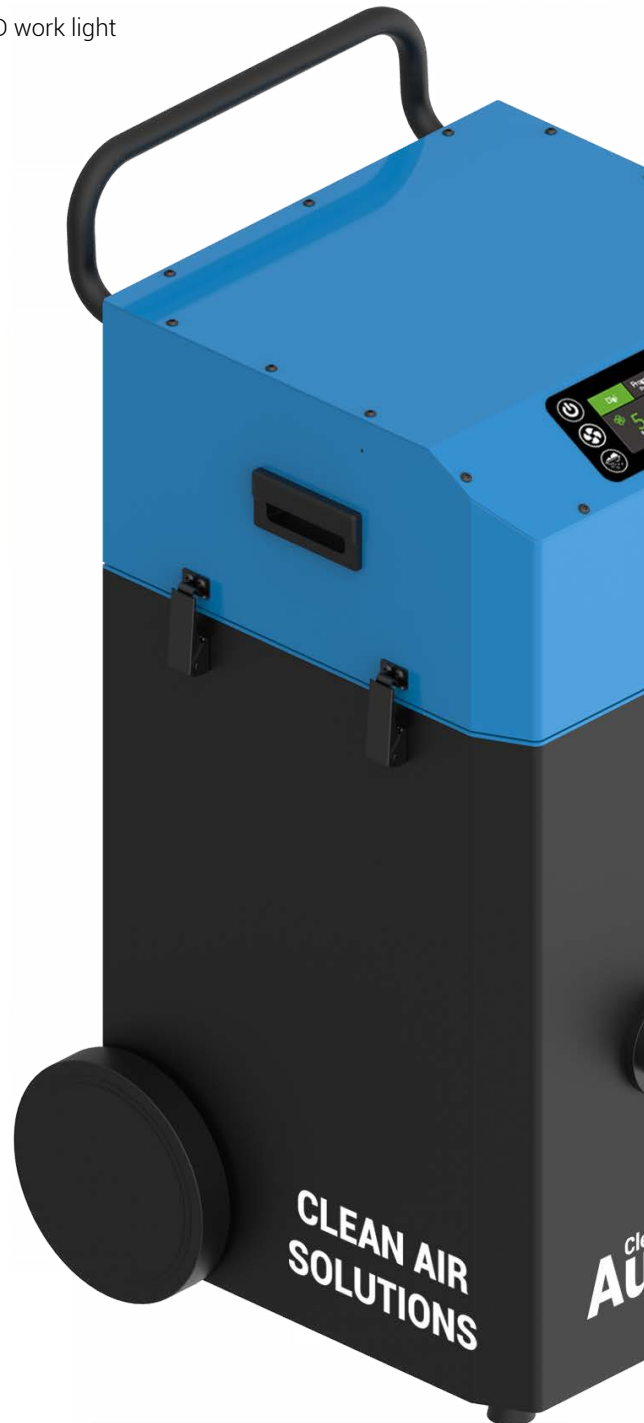
AEROARC

TORCHOLOGY
CLEAN AIR SOLUTIONS



Aeroarc Digital Torch

- Aeroarc digital display torches switch between unit parameters and welding machine parameters
- Aeroarc digital (2 way) torches control motor power control only (flow rate)
- Integrated LED work light



Packaging

Dimensions:	
Unit only	520 x 560 x 930mm
Packaging (inc pallet)	TBC
Weight:	
Unit only	49kg
Gross Weight inc pallet	TBC
Harmonized Tariff Code	TBC

Standards

Welding Fume Class

- W3 according to ISO 21904 Part 1 and 2

Filters:

- Main Filter E10 according to DIN EN 1822

For details on the CleanWeld Fume Extraction torches click or scan

