

# CleanZone Aura Max

High-performance extraction, the quietest in class

The CleanZone Aura Max offers greater coverage and flexibility for more demanding applications. Designed to support single or dual-user setups, it delivers reliable fume extraction while remaining easy to position and integrate into the working environment.

The unit is the quietest in class, creating a more comfortable working environment. Efficient filtration, automatic filter cleaning and performance alerts help to keep maintenance simple and productivity consistent, while the long-life brushless motor further reduces downtime.

For maximum performance pair the Aura Max with the [Aeroarc Fume torch](#) to capture fumes directly at the source, ensuring a safer, cleaner environment for every weld.



## The quietest unit in its class

Filter	
Stages	2
Filtration Efficiency	99.9%
Cleaning	Auto Cleaning (compressed air)
<b>Filter Area:</b> Main	3.5 m <sup>2</sup>
<b>Filter Material:</b> Main Spark Arrestor	Polyester and PTFE Galvanized Steel

Performance	
Extraction Capacity	141.5 m <sup>3</sup> /h @18KPa 223 m <sup>3</sup> /h @ 5KPa
Maximum Vacuum	22KPa
Max Airflow (fan on its own)	186 m <sup>3</sup> /h

Performance	
Power Supply	220V 1 Phase - 50Hz-60Hz 380V 3 Phase - 50Hz-60Hz
Motor Power	220V 1 Phase - 2200W 380V 3 Phase - 2200W
Noise Level	XXdB(A) @ 50% 70dB(A) @ 100%

## KEY FEATURES

- **Users:** Up to 2
- **Brushless Motor:** Continuous operation; ≥5,000-hour service life.
- **Operation:** Auto start/stop function
- **Dust Collection:** Automatic filter cleaning  
Visual and audio alarms  
6L integrated tray
- **OLED Display:** Parameters at a glance/output, filter fill, volume flow, start-up/run time

## APPLICATIONS

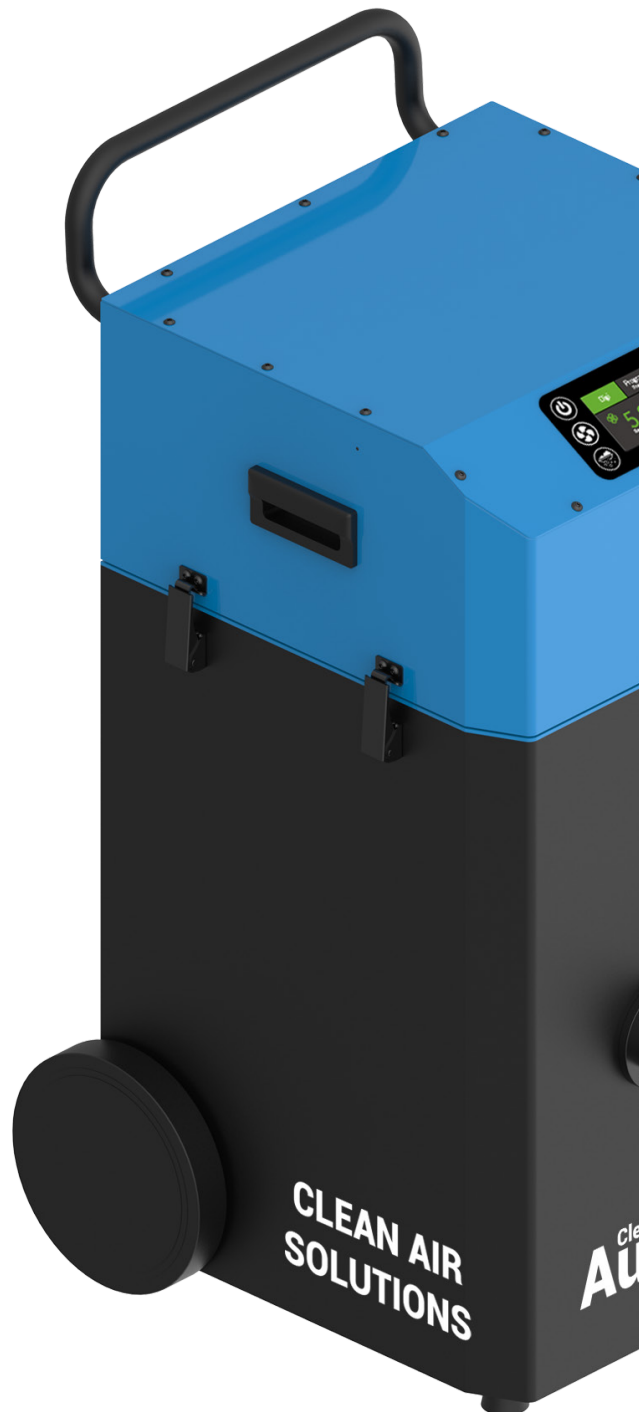
- Single or dual torch welding stations
- Medium to heavy duty applications
- Moderate to high fume generating metals, e.g., mild steel, aluminium, alloy metals, Flux cored.
- Up to 25m hose interconnection (plus torch)



## Tool Free Maintenance - Filter Exchange

Easily open the top part and hinge backwards using the quick release catch.

Filters are easily accessible and can be replaced in a few simple steps without additional tools



## Packaging

<b>Dimensions:</b>	
Unit only	520 x 560 x 930mm
Packaging (inc pallet)	TBC
<b>Weight:</b>	
Unit only	49kg
Gross Weight inc pallet	TBC
HS Tariff Code	TBC

## Standards

### Welding Fume Class

- W3 according to ISO 21904 Part 1 and 2

### Filters:

- Main Filter E10 according to DIN EN 1822

For details on the CleanWeld Fume Extraction torches click or scan

